

## SCAN TO CAD EASY

**QUICKSURFACE** is the ultimate reverse engineering solution for turning your 3D-scanned data into B-rep based CAD models.

Equipped with full-featured, ease-of-use and efficient algorithms, **QUICKSURFACE** provides unbeatable reverse engineering experience in your industrial design and manufacturing pipeline.

### Fully Parametric

QUICKSURFACE's history-based modelling makes your workflow smooth and easy, your design intent and iterations problem-free.

### Built for Reverse Engineering

QUICKSURFACE lets you build up the CAD models on top of the scanned files with all the features and surfaces precisely snapped to the scan data. No more stone-age caliper measuring!

### Great Input Support

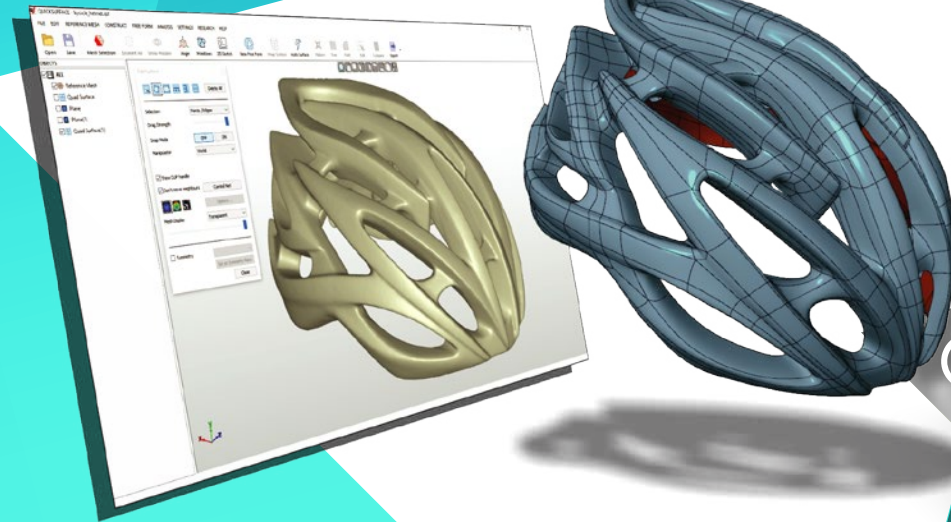
QUICKSURFACE supports all standard polygonal formats including STL, OBJ, PLY and point cloud data PTX.

### Link To Your CAD Program

Export reconstructed surfaces / solids as standard STEP or IGES files, or use QSCconnect to transfer the entire parametric history to SolidWorks and keep working with the same editable features.

**QUICKSURFACE**  
The modern 3D reverse engineering software

*Powerful Yet Affordable  
Parametric Reverse Engineering*

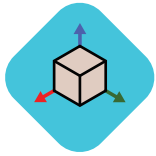


[www.ireal3dscan.com](http://www.ireal3dscan.com)



IREAL 3D

## POWERFUL REVERSE ENGINEERING TOOLS



The smart **Alignment** tools help you place the scanned STL mesh correctly in the world coordinates so you can have a good start.

Interactive **2D Sketch** tools are capable of capturing the mesh's cross-section points. Use **constraints** to control your design precisely.



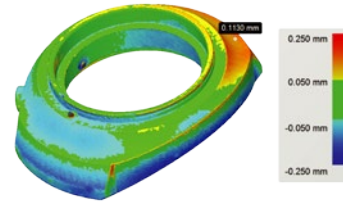
Proprietary **Free From** tools let you pave surfaces on top of curved shapes effortlessly.

The **Automatic Surfacing** tool provides a 1-click, headache-free solution for creating CAD models from complex organic shapes.



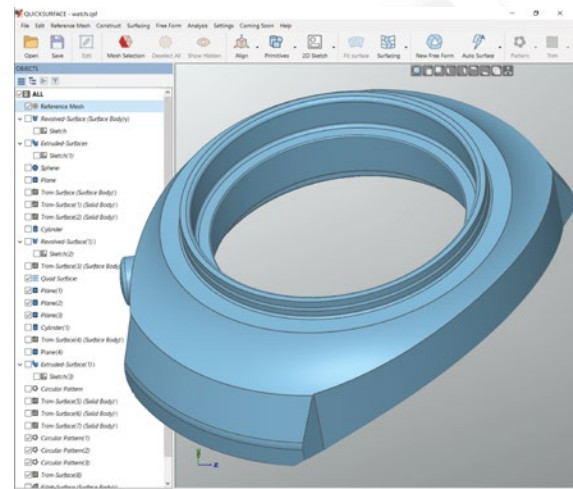
## DEVIATION TOOL

Compare the CAD model to the original scan data for precision control.

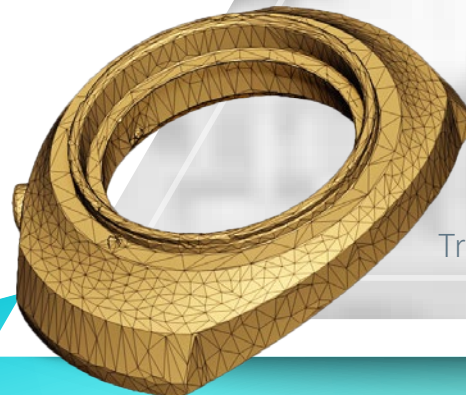


## SNAP-TO-MESH

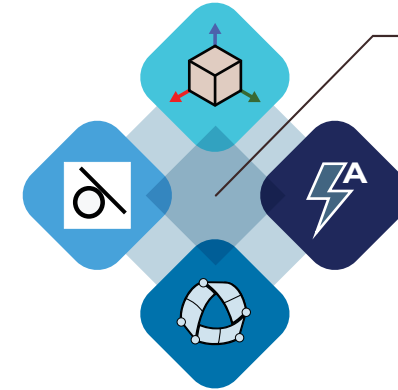
The snap-to-mesh technology lets you reconstruct CAD models precisely on top of any polygonal mesh (STL, OBJ, PTX, etc).



CAD Model



Triangular STL



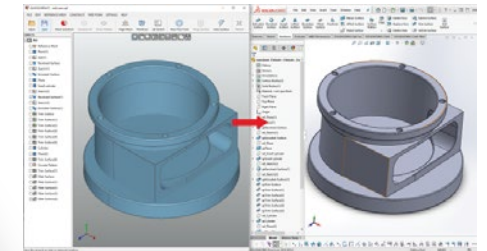
## Parametric Core

With great compatibility and versatility, QUICKSURFACE can reconstruct any solid and surface without a hitch.

\*QUICKSURFACE supports only Windows 10 64bit OS.

## QSConnect

Transfer the entire parametric history to SolidWorks and keep designing with editable features.



IREAL 3D

Email: [iad@3d-scantech.com](mailto:iad@3d-scantech.com)

Web: [www.ireal3dscan.com](http://www.ireal3dscan.com)