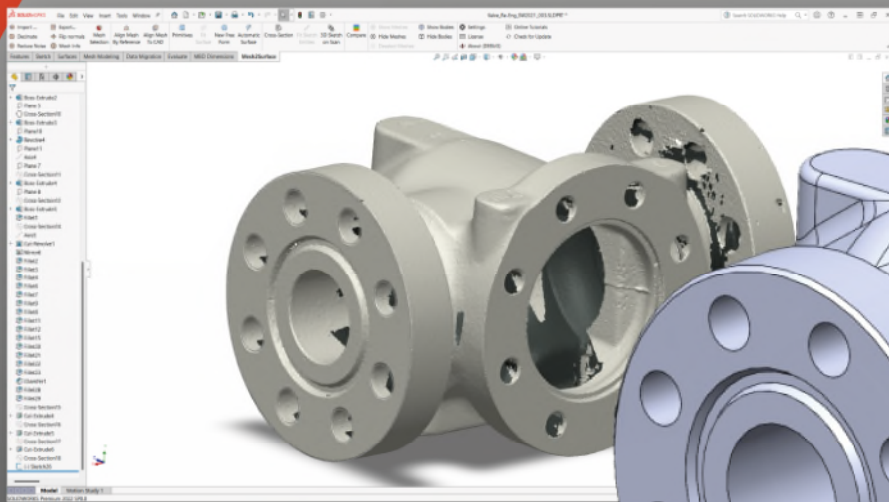


# mesh2surface

for  SOLIDWORKS®



**The bridge between 3D scanning  
and manufacturing!**

# What is Mesh2Surface for SOLIDWORKS®?

**Mesh2Surface** is a reverse engineering add-in for **SOLIDWORKS** that lets you convert 3D scan meshes into CAD models. It provides efficient tools to generate surfaces and curves to help reconstructing a professional CAD model.

**Mesh2Surface** allows the user to:

- Import large scan data effectively in **SOLIDWORKS** in seconds, not minutes;
- Extract reference geometries, including symmetry plane;
- Align intuitively in the right position in space, to existing cad model or multiple scans;
- Create reference cross sections for sketching - parallel, rotational and outline;
- Fit precisely line arcs and complex shapes to reference section points
- Approximate free form surfaces with best fit surface;
- Reverse engineering organic and free form shapes in most accurate way;
- Compare the CAD models against the reference data instantly with 3D colour map;
- Convert free form organic shapes just with the hit of a button;

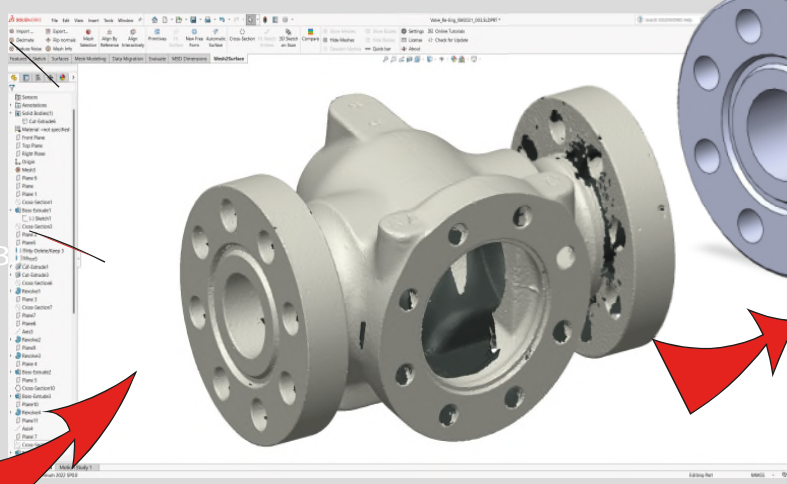
And do all this in your favourite CAD package - **SOLIDWORKS**;



STL

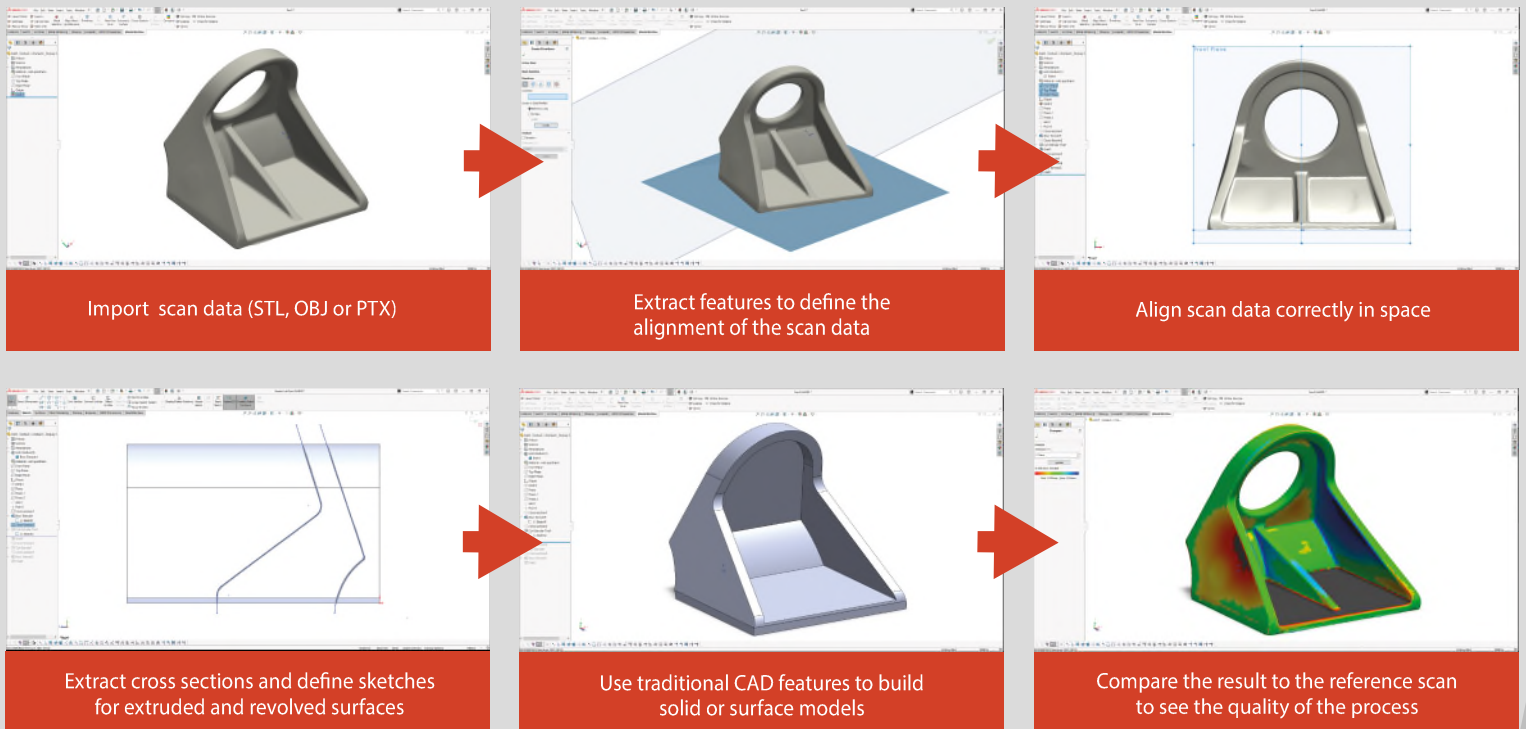
OBJ

PTX



Save more than **50%** on time and efforts over any other approach of doing reverse engineering in **SOLIDWORKS®** by using **Mesh2Surface** add-in.

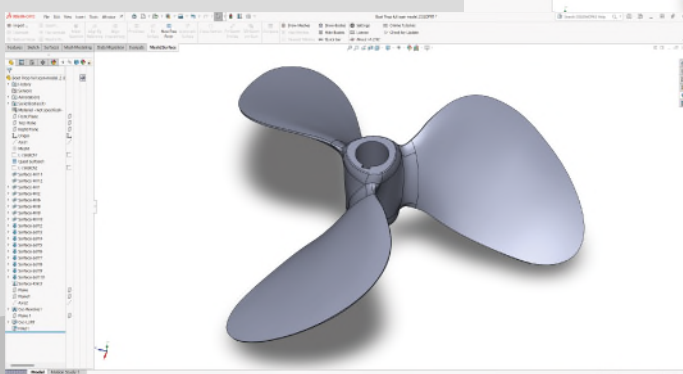
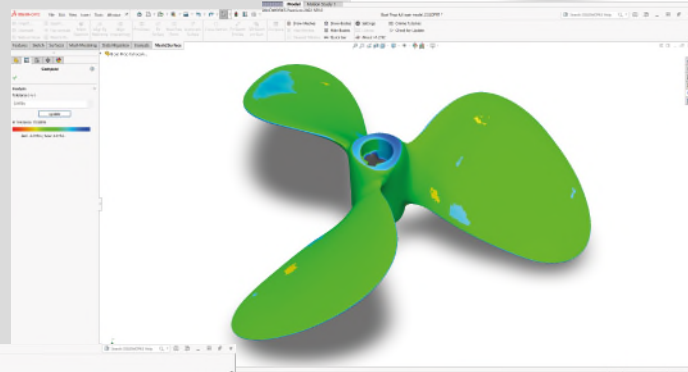
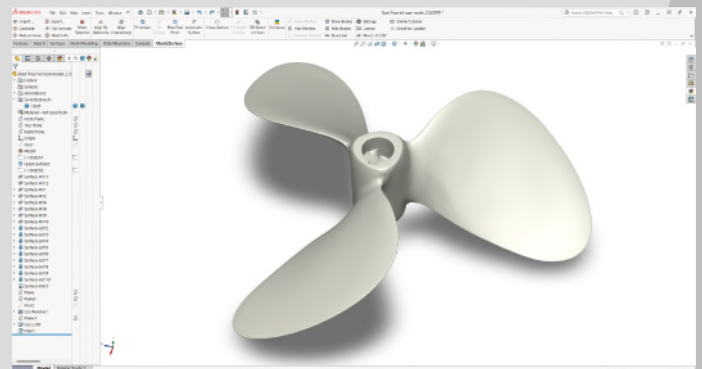
# Reverse engineering workflow



Do it all in **SOLIDWORKS®** environment with simple and easy to use tools of **Mesh2Surface** add-in

## Features

- Import scan data as STL, OBJ, PLY or PTX file format
- Mesh simplification and smoothing
- Primitives extraction, including symmetry plane
- Alignment in space or to CAD model
- Cross sections
- 2D shapes recognition
- 3D sketching with toleranced control
- Fit surface
- Deviation analyser
- Free form and hybrid modelling
- Snap to mesh technology
- Automatic surfacing





## Powerful Reverse Engineering in SOLIDWORKS®

- Edit and repair CAD data for broken tools and molds
- Use existing assets to reverse engineer new parts
- Transform physical parts into CAD for new designs
  - Create new parts to fit with existing parts
  - Export remodelled data for 3D printing
    - Speed up your time for manufacturing
    - Prepare models for manufacturing
    - Simplify models for simulation
    - Increase design capabilities
      - Design bespoke products
      - Reduce costs for design
      - Packaging Design

### CONTACTS:

KVS Ltd  
United Kingdom  
Cambridge  
Phone: +44 793 879 9083

[info@quicksurface3d.com](mailto:info@quicksurface3d.com)

KVS Ltd  
Bulgaria  
Sofia  
Phone: +359 888 209 860

[info@mesh2surface.com](mailto:info@mesh2surface.com)

**TRY for FREE:**

[www.mesh2surface.com](http://www.mesh2surface.com)